



ROLL UP

EXTERIOR BLIND

ASSEMBLY GUIDE

Installing your new Coolaroo Exterior Blind is simple, following our step-by-step instructions.

Parts list

Description

Qty

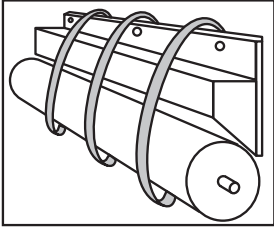
a. Exterior blind	1
b. Anchor plates	2
c. Rope cleat	1
d. Screws	10
e. Anchors	10

You will also need:

- Power drill with 3mm bit
- Phillips head screwdriver
- Level
- Tape Measure
- Pencil

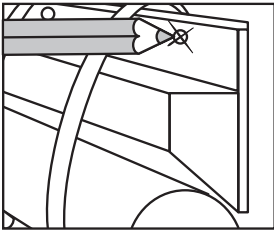
Installation Instructions

Whilst Coolaroo Exterior Blinds are designed primarily for use on exterior windows, they are equally at home as drop shades on pergolas, patios, verandahs, etc.



STEP 1

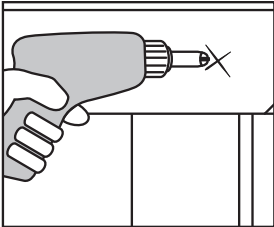
Once you have selected the spot for your Exterior Blind keep it in the rolled up position and hold the aluminium headrail in place where you would like it installed.



STEP 2

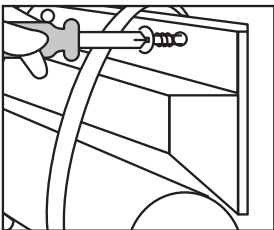
Mark the screw position where you intend drilling holes for the fixing screws, ensuring the blind is level.

PLEASE NOTE: Wall plugs (not supplied) may be required for brick work. Use an appropriate masonry drill bit.



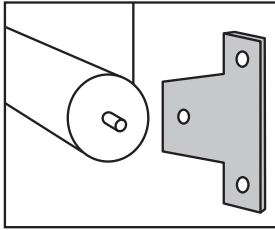
STEP 3

Remove the blind and using the 3mm drill bit, drill holes where marked.



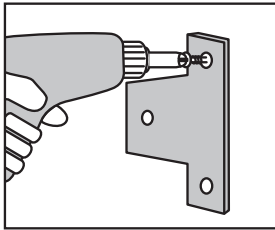
STEP 4

Reposition the blind and using a Phillips head screwdriver, fix the screws to secure the blind.



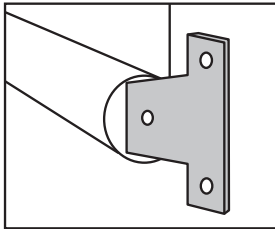
STEP 5

Unroll the blind to full length. To install the anchor plates, apply light tension to the blind, snap them onto each end of the bottom rail and mark where the screw position is through the holes in the anchor plates.



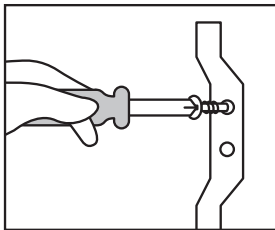
STEP 6

Using the 3mm drill bit, drill holes and secure plates into place using the timber screws provided.



STEP 7

Lock the base rail into the anchor plates to secure the Exterior Blind in the fully drawn (down) position.



STEP 8

To attach the rope cleat, hold the cleat in position, mark holes, drill then screw the rope cleat into place using the screws provided. The cleat should be positioned so that the pull cord will be out of reach of young children. Pull the cord taut and wind it tightly around the cleat to hold the Exterior Blind in place.

WARNING:

Blind Cords may create a strangulation hazard for young children.

KEEP BLIND CORDS OUT OF REACH OF YOUNG CHILDREN.

Maintenance

Your Exterior Blind has been made of the finest materials and, when properly cared for, will provide years of shade, privacy and protection from the elements. To clean your shade, simply rinse with water, scrub with mild soap or any nonabrasive cleaner, rinse and allow to dry.

Do not store shade wet. In areas of high humidity, roll shade down frequently to air dry.

CAUTION: Use of solvents or abrasive cleaners may damage the fabric and will void your warranty. Do not use bleach or chlorine.

Designed in Australia. Made in China.



Fully retract the Shade when not in use, or before strong storms to prevent damage.



GALE
P A C I F I C

Gale Pacific Limited 145 Woodlands Drive, Braeside, Victoria
3195 Australia

Gale Pacific Limited Suite A 45C Mt Wellington Highway,
Mt Wellington, Auckland 1060 New Zealand

For help with product assembly or for any other questions
you may have, contact our Customer Service Department.

Australia Toll Free: 1800 331 521

New Zealand Toll Free: 0800 555 171

United States Ph: +1 407 772 7900

Middle East Ph: +971 4 881 7114

China Ph: +86 574 5626 8888

© Coolaroo is a registered trademark of Gale Pacific Limited.

Made in China.




Coolaroo[®]
coolaroo.com