

## 5 YEAR FABRIC AND 2 YEAR PARTS WARRANTY AND LIMITATION OF LIABILITY

Coolaroo products are manufactured by Gale Pacific Limited ACN 082 263 778 (Gale). Gale provides the following warrant in relation to Coolaroo products ("Product"). The benefits of this warranty are in addition to any rights and remedies imposed by Australian Consumer Law, NZ Consumer Guarantees Act 1993, and state and federal legislation that cannot be excluded. Nothing in this warranty is to be interpreted as excluding, restricting or modifying any applicable legislation to the supply of goods and services which cannot be excluded, restricted or modified.

### WARRANTY

Gale warrants that, subject to the exclusions and limitations below, all parts of the manufacture and assembly of the Product will be free from defects in materials and workmanship for a period of five (5) years fabric and two (2) years parts.

If a defect appears in the Product before the end of the warranty period and Gale finds the Product to be defective in materials or workmanship, Gale will, in its sole discretion, either:

- replace or repair the Product or the defective part of the Product free of charge; or
- refund the purchase price of the Product.

Gale reserves the right to replace defective parts of the Product with parts and components of similar quality, grade and composition where an identical part or component is not available.

The warranty will not apply where:

- the Product has been altered or modified by someone other than Gale or its authorised agent;
- the alleged defect in the Product is within acceptable industry variances;
- Gale cannot establish any fault in the Product;
- the defect in the Product has arisen due to the customer's failure to install and use the Product in accordance with the instructions provided;
- the defect in the Product has arisen due to the customer's request to customise the Product;
- the Product has been subject to abnormal conditions, including environment, temperature, water, fire, humidity, pressure, stress or similar.

The warranty does not extend to:

- damage or defects caused by normal wear and tear,
- water or sun damage; or
- any other damage caused by the customer placing other equipment, furniture or material in close proximity to the Product. Gale makes no express warranties or representations other than set out in this warranty.

The repair or replacement of the Product or part of the Product is the absolute limit of Gale's liability under this express warranty.

**GALE**  
PACIFIC

Australia Toll Free: 1800 331 521  
New Zealand Toll Free: 0800 555 171  
United States Ph: +1 407 772 7900  
Middle East Ph: +971 4 881 7114  
China Ph: +86 574 5626 8888

© Coolaroo is a registered trademark of Gale Pacific Limited  
Made in China



### WARRANTY CLAIMS

- Upon purchasing the Product, the customer must register their warranty by completing the Coolaroo online warranty registration at [www.coolaroo.com](http://www.coolaroo.com). Alternatively, the customer can contact Coolaroo Customer Service on 1800 331 521 (AU) or 0800 555 171 (NZ) for assistance.
- If a fault covered by warranty occurs, the customer must contact Gale using the contact details provided.
- Any warranty claim must be accompanied by proof of purchase and details of the alleged defect.
- The customer must bear the cost of the transport of the Product to and from Gale or the authorised agent to make the warranty claim, and all insurance of the Product.

### AUSTRALIAN CONSUMER LAW

Nothing in this agreement is intended to have the effect of contracting out of any applicable provisions of the Competition and Consumer Act 2010 or the Fair Trading Acts in each of the States and Territories of Australia, except to the extent permitted by those Acts where applicable.

This warranty is not transferable, and applies only to the initial purchaser of the installed Product.

In addition to the above warranty, Australian Consumer law and other state and territory legislation may imply warranties or conditions or impose liability on Gale in relation to the Product or its supply which cannot, or can only to a limited extent, be excluded, restricted or modified. Except for those implied warranties or conditions and such liability, and for the warranty described above:

- all warranties and conditions (whether express or implied, statutory or otherwise) relating to the Product or its supply are expressly excluded; and
- Gale will not be liable for any loss or damage suffered by any person (including the purchaser of the Product) in any way relating to or arising from the Product or its use (including loss or damage arising from the negligence of, or contributed to by, Gale).

If liability for breach by Gale of a warranty or condition or any other liability imposed on Gale by legislation which cannot be excluded may be limited, Gale's liability is limited to the extent permitted by law, and if liability may be limited in any one of a number of ways, Gale's liability is limited in any one of the permitted ways chosen by Gale in its absolute discretion.

The Purchaser acknowledges that the Purchaser does not rely on the skill or judgment of Gale as to whether or not the Products are fit for any particular purpose.

The Purchaser indemnifies Gale from every liability, loss, damage, cost or expense directly or indirectly incurred or suffered by Gale caused by or contributed to by the Purchaser's failure to:

- adequately provide or display safety markings or safety information on or with the Products;
- comply with any law about the Products or their use;
- take any reasonable precaution to bring to the attention of any potential users of the Products any dangers associated with Products;
- any negligence or breach of duty by the Purchaser or any breach by the Purchaser of these terms.

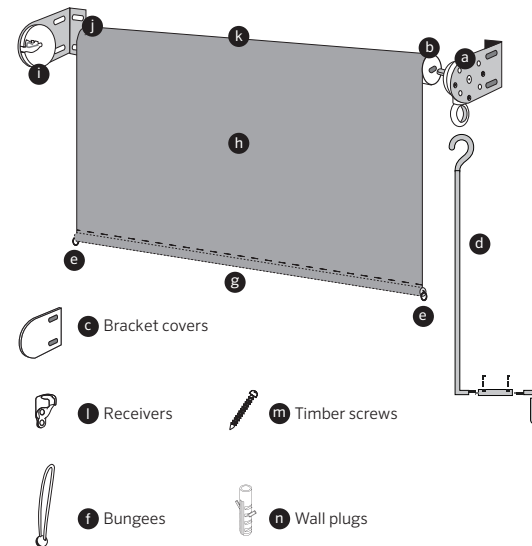
**GALE**  
PACIFIC

[coolaroo.com](http://coolaroo.com)

**Coolaroo**

## Cordless Exterior Blind

## Installation Instructions



PARTS LIST		QTY
a	Clutch unit bracket	1
b	Clutch plug	1
c	Bracket covers	2
d	Crank handle assembly	1
e	Bottom rail caps	2
f	Bungee tie downs	2
g	Bottom rail	1
h	Blind	1
i	Idle end unit bracket	1
j	Idle end plug	1
k	Aluminium tube	1
l	Bungee receiver	2
m	Timber screws	8
n	Wall plugs	8

### ADDITIONAL TOOLS NEEDED

- Power drill with 5mm masonry bit
- Screwdriver (phillips head)
- Level
- Tape measure
- Pencil



This exterior blind comes standard with the clutch on the right side of the shade and can be mounted on the outside or inside (**Fig. 1**) of your window frame.

If you want to move the clutch to the left side of the shade or you want to hang your shade from the top of the window (or ceiling), please refer to the **converting clutch bracket to suit left-hand clutch control** and **converting brackets to suit top mount** section of this manual before commencing Step 1.

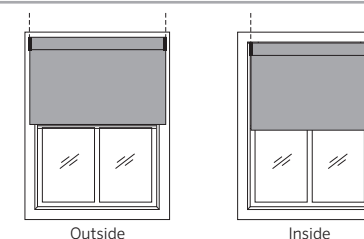
### 1 INSTALLING THE BRACKETS

- Space the brackets 307cm apart and use a pencil to mark the hole positions.

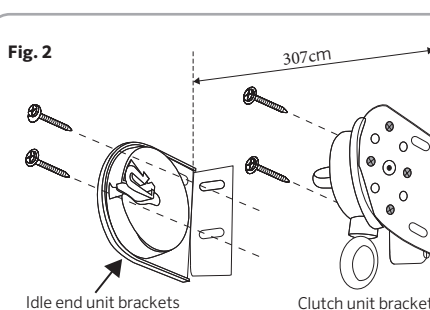
**NOTE:** The clutch unit bracket will be on the right side, and the idle end unit bracket should be on the left for a standard installation.

- Pre-drill your pilot holes ensuring that you are attaching to a suitably reinforced surface (ie. timber framework). If mounting to masonry, use the wall plugs provided.
- Screw the brackets into position (**Fig. 2**) using a phillips head screwdriver and the timber screws provided. Do not fully tighten the screws.

**Fig. 1**



**Fig. 2**



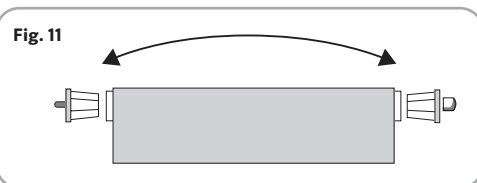
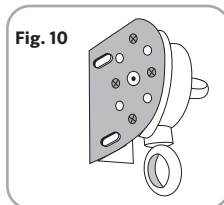
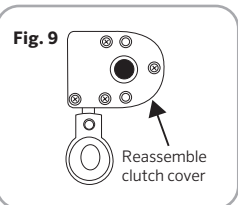
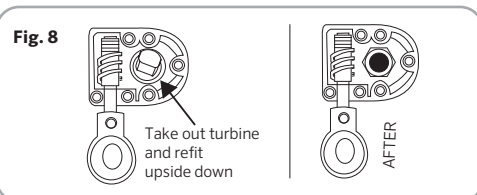
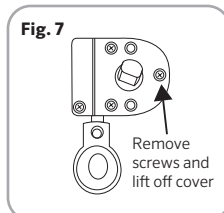
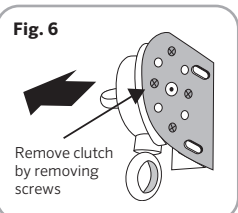
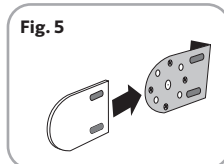
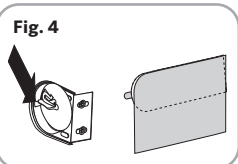
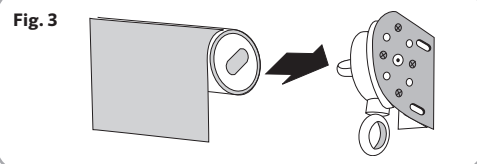
## 2 INSTALLING THE BLIND

- Insert the clutch end of the blind onto the clutch unit bracket (**Fig. 3**) and the idle end into the idle end unit bracket (**Fig. 4**) until it snaps securely into place.
- Position the brackets to ensure the blind is held firmly between the brackets and tighten the screws.
- Install the bracket covers on to the brackets (**Fig. 5**).

### CONVERTING CLUTCH BRACKET TO SUIT LEFT-HAND CLUTCH CONTROL

Follow these steps to change the turbine around in the clutch to set it up for left hand operation.

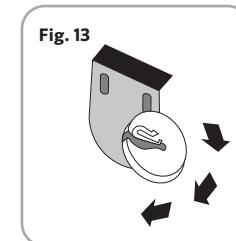
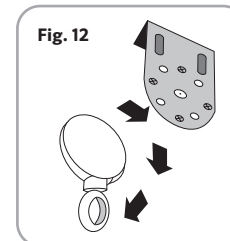
- Slide off bracket cover.
- Remove the clutch assembly from the bracket by unscrewing the phillips head screws (**Fig. 6**).
- Remove the cover from the clutch assembly by unscrewing the phillips head screws (**Fig. 7**).
- Take out the turbine and refit it upside down (**Fig. 8**).
- Reassemble the clutch cover (**Fig. 9**) and bracket (**Fig. 10**) then refit the bracket cover.
- Remove the clutch and idle end plug from the end of the blind and swap them around (**Fig. 11**).



### CONVERTING BRACKETS TO SUIT TOP MOUNT

If you are installing your blind from the top remove the screws and rotate the clutch unit 90 degrees so the clutch eyelet points downwards (**Fig. 12**). Refit the screws and tighten.

Remove the screws and rotate the idle end unit (**Fig. 13**) so the opening is facing away from the window. Refit the screws and tighten.

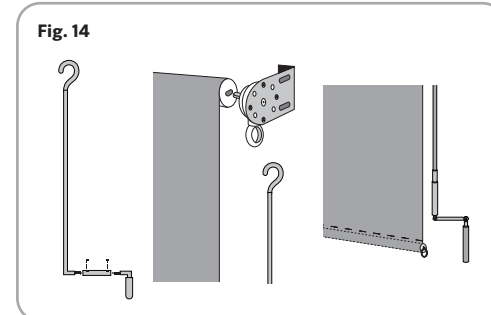


## 3 CRANK HANDLE OPERATION

First, assemble the crank handle using the screws and crank handle components, as shown.

Locate the hook on the crank handle through the eyelet on the clutch unit and use both hands to rotate the handle to adjust the blind up and down (**Fig. 14**).

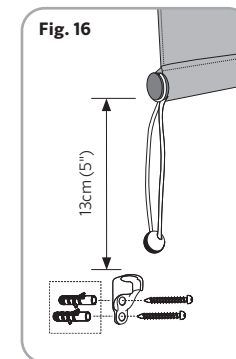
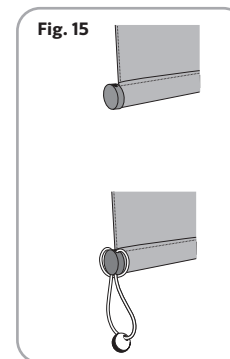
**NOTE:** Remove and store crank handle when not in use.



## 4 INSTALLING BUNGEE TIE DOWNS (optional)

Bungee tie downs have been provided to secure your blind in mild to moderate wind conditions.

- Thread the bungee through the end cap and back through itself making a lark's head knot (**Fig. 15**).
- Use the timber screws to install the receiver approximately 13cm (5") below where the blind will stop. Fit a receiver on each side of the blind (**Fig. 16**). Use the 5mm wall plugs if screwing into masonry.
- Attach the bungee to the receiver to secure the blind when in the down position.



Retract your exterior shade when not in use, or before strong storms, to prevent damage.

**MAINTENANCE:** Your exterior blind has been made of the finest materials and, when properly cared for, will provide years of shade, privacy and protection from the elements.

To clean your shade, simply rinse with water, scrub with mild soap or any non abrasive cleaner, rinse and allow to dry.

Do not store shade wet. In damp environments roll blind down frequently to air dry.

Retract your exterior blind when not in use, or before strong storms, to prevent damage.

**CAUTION:** Use of solvents or abrasive cleaners may damage the fabric and will void your warranty.

Do not use bleach or chlorine.